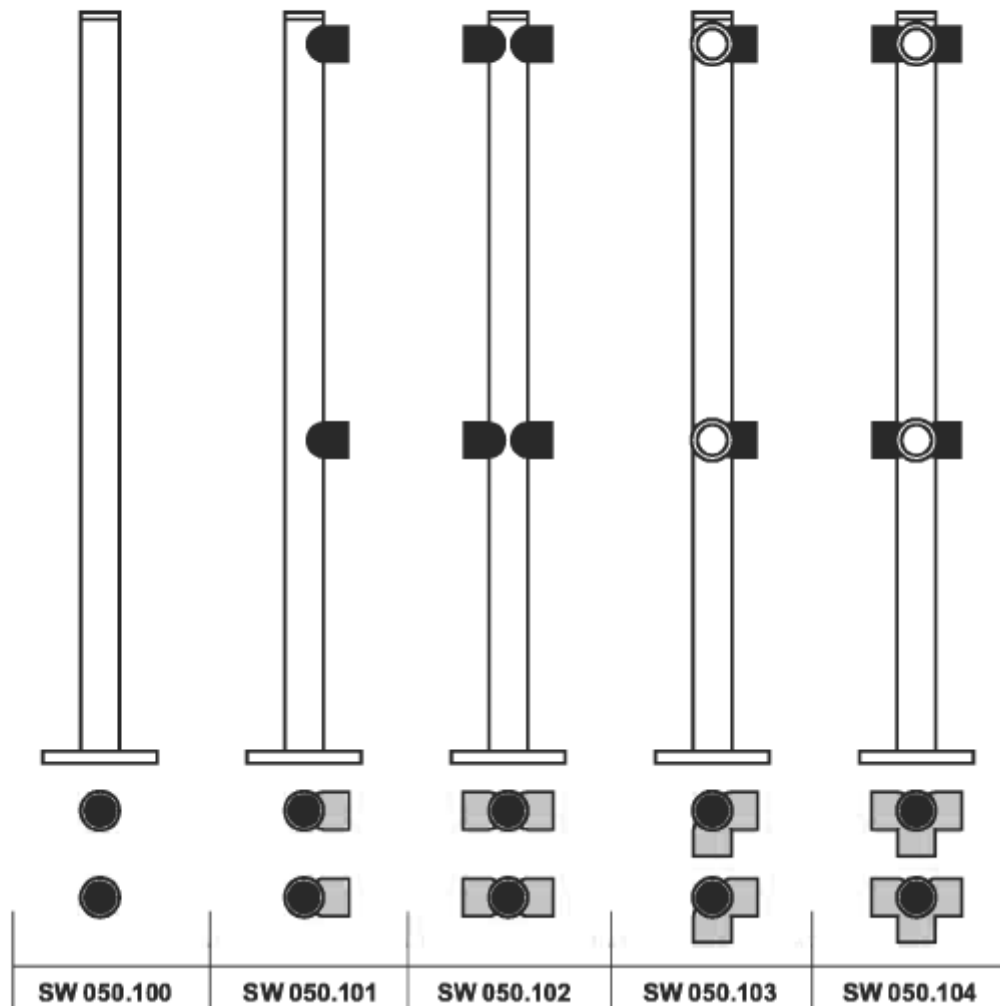
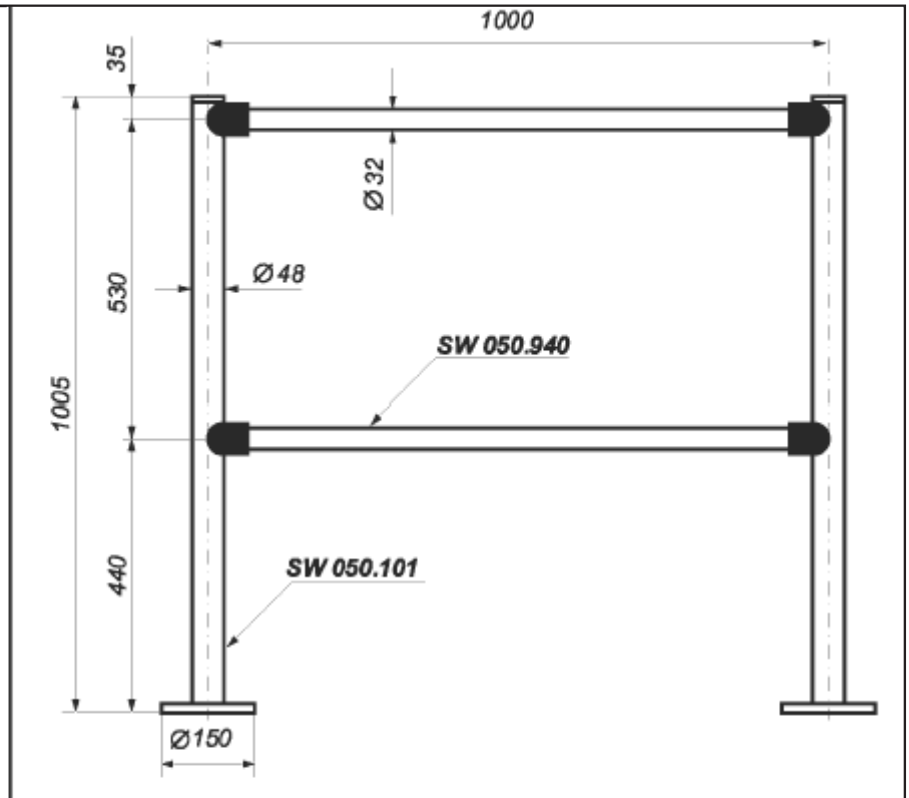


**Low separator posts**

Low separator posts are used to freely arrange the areas of markets, stores, airports, etc. Posts are made from steel pipes coated with nickel chromium and are mounted to firm floors using three  $\text{M}8 \times 120$  screws and pegs. To be used in closed places only. Weight – approximately 4 kg.

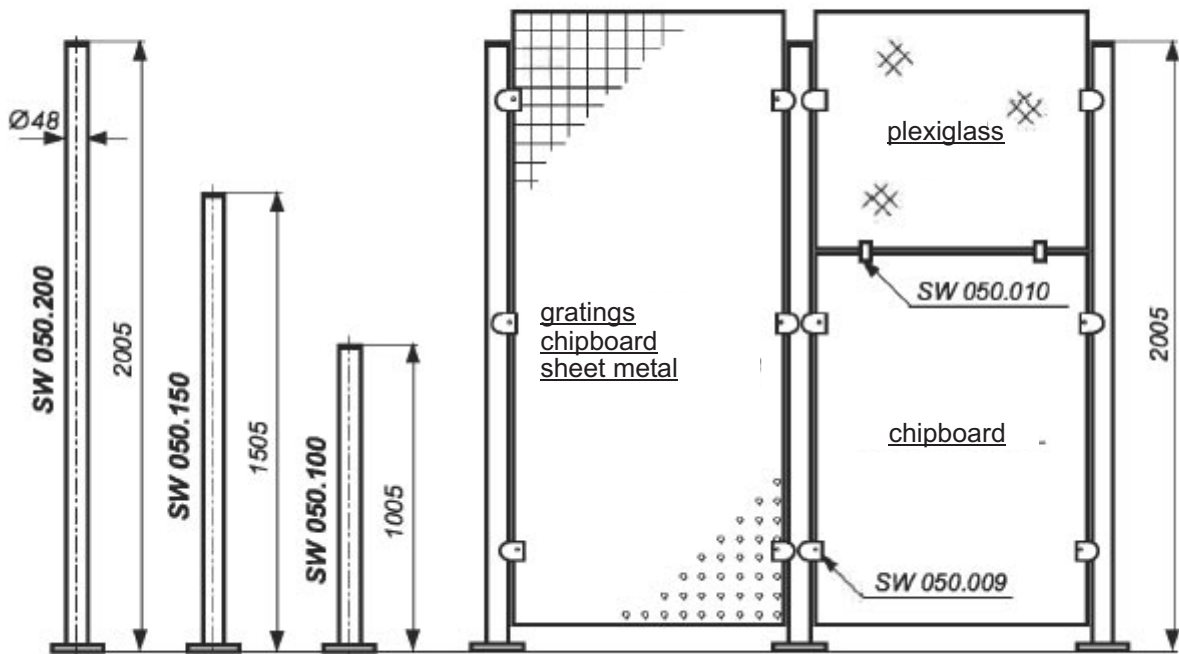
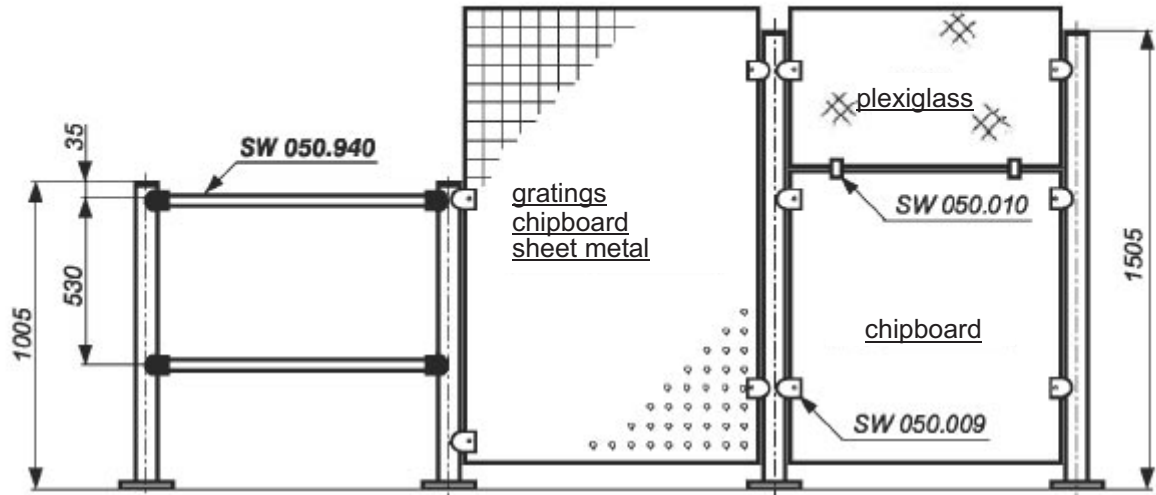


Manufacturer:

**ZPU METAL – POZ 83**  
 60-665 POZNAN, ZYWOKOSTOWA Street #15  
 TEL/FAX +48 61 823 27 75, FAX +48 61 825 94 53  
 E-mail: biuro@metal-poz83.pl / www.metal-poz83.pl

Low, medium and high separators are used to freely organize spaces with the help of different filling materials such as chromium coated or painted metal gratings, perforated sheet metals, laminated chipboards or plexi sheets. A combination of two fillings can be used, e.g. chipboard and glass or plexi. For open-work separators, the filling material is 12 steel pipe. The shape of the walls and location of the connectors are designed according to individual orderings. Posts are made of steel coated with nickel chromium.

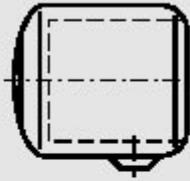
To be used and mounted on firm floors of closed places only. Posts are mounted by Ø8x120 screws and Ø12x100 pegs. Weight of posts: SW 050.150 = 6kg, SW 050.200 =8kg.



Manufacturer: **ZPU METAL – POZ 83**  
 60-665 POZNAN, ZYWOKOSTOWA Street #15  
 TEL/FAX +48 61 823 27 75, FAX +48 61 825 94 53  
 E-mail: biuro@metal-poz83.pl / www.metal-poz83.pl

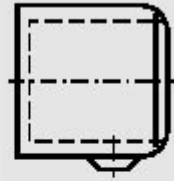
**Universal coupling  
SW 050.001**

Universal coupling serves as an element that mounts the posts to horizontal connecting pipes. Coupling is made from black plastic.



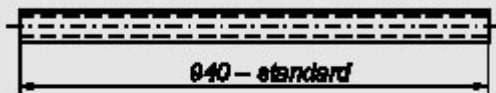
**Wall coupling  
SW 050.002**

Wall coupling serves an element that connects the wall and posts through a horizontal connecting pipe. Wall coupling is made from black plastic.



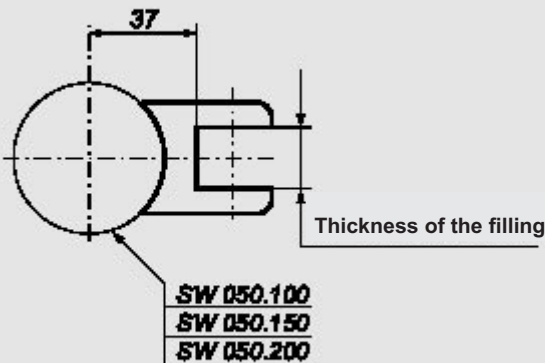
**Connecting pipe SW 050.940**

Steel metal coated with nickel chromium. May have different lengths, however not more than 2000mm to ensure durability. Weight – 1kg



**Fly-cut connector SW 050.009**

Fly-cut connectors made of steel coated with nickel chromium. Used for mounting into it chipboards, gratings, sheet metals, plexi or other fillings. When ordering, please specify the thickness. Weight – 0.2 kg



**Double sided connector SW 050.010**

Double sided connector is made of metal coated with nickel chromium. Used for mounting into it two different fillings, e.g. chipboard and glass or plexi. When ordering please specify the thickness. Weight – 0.1 kg.

